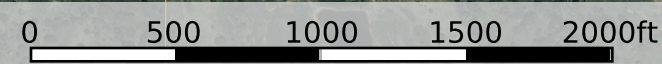
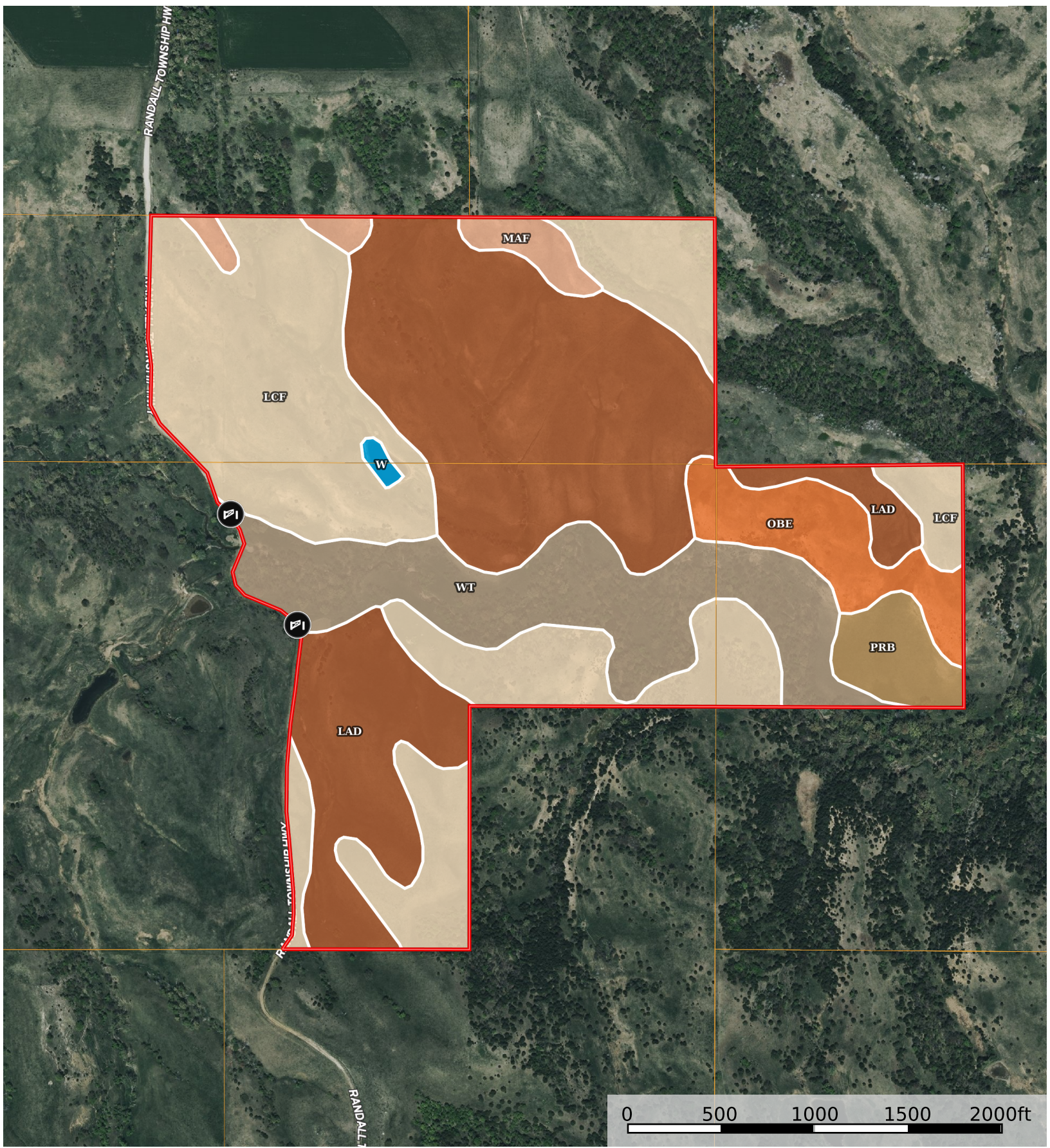


230± Acres, Gregory County, South Dakota

South Dakota, AC +/-



Gate Boundary

Boundary 232.36 ac

SOIL CODE	SOIL DESCRIPTION	ACRES	%	CPI	NCCPI	CAP
LaD	Labu clay, 9 to 15 percent slopes	86.89	37.39	36	31	6e
LcF	Labu-Sansarc silty clays, 9 to 35 percent slopes	82.24	35.39	33	26	6e
Wt	Wendte silty clay, channeled, occasionally flooded	36.49	15.7	33	23	6w
ObE	Okaton-Lakoma silty clays, 15 to 40 percent slopes	13.38	5.76	14	11	7e
PrB	Promise clay, 3 to 6 percent slopes	6.97	3.0	64	26	3e
MaF	Mariaville loam, 15 to 40 percent slopes	5.68	2.44	4	6	7e
W	Water	0.71	0.31	0	-	8
TOTALS		232.36(*)	100%	33.15	25.97	6.0

(*) Total acres may differ in the second decimal compared to the sum of each acreage soil. This is due to a round error because we only show the acres of each soil with two decimal.

